

# ***Sewper Rx***

## **Sludge Reduction System**

---



*Sewper Rx* is a proprietary poly-microbial blend of common, natural microbes mixed with nutrients and enzymes. It exhibits superior digestion properties for the treatment of sewage sludge and greases, yet it is harmless to the environment. The bi-products of this unique product are water and carbon dioxide, with no slime or biomass buildup. Key advantages are –

- **This product does not have to be added continually – usually once every 30 to 90 days.**
- **The product is granular, so it is simple to ship, store and handle.**
- **The use of *Sewper Rx* usually provides a Return on Investment within the 1<sup>st</sup> year.**

---

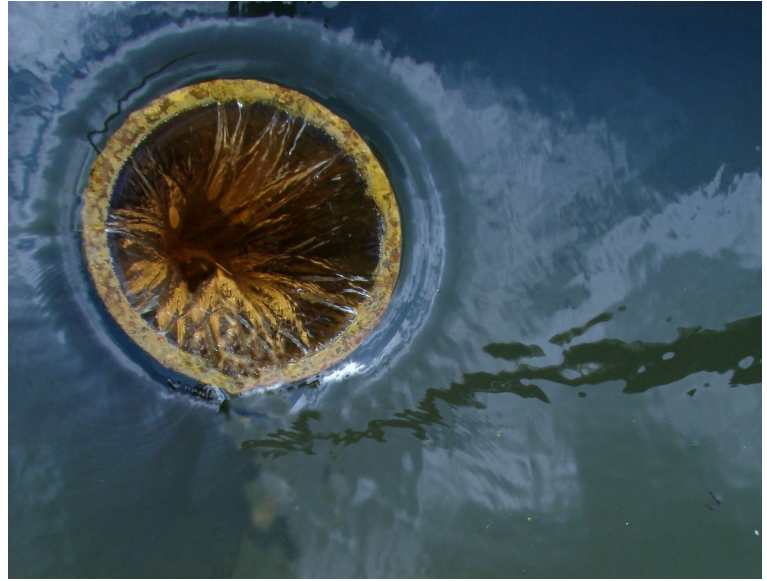
### ***Sewper Rx***

- Consumes most of incoming organic waste every 24 hours.
- Increases plant capacity.
- Drives down operating costs.
- Solves odor problems.

#### **The regular use of *Sewper Rx* has been shown to:**

- Reduce the volume of sludge requiring post treatment handling or disposal by up to 80%.
- Reduce or eliminate odors.
- Improve settling while reducing or eliminating the need for polymers and chemicals used in the sludge thickening process.
- Reduce electricity consumption.
- Improve effluent quality.
- Increase plant capacity by as much as 50% or more than design specifications.
- **Provide an activated sludge plant a Return on Investment within 8 months.**

# Visual Examples of *Sewper Rx* Capabilities



## 250,000 GPD Plant

**Problem:** 5 years out of compliance due to Hurricane Katrina damage

State discharge limits – BOD <10, TSS <15 mg/l

**Actual** – May 2010 – BOD 25 to 40, TSS 35 to 50 mg/l

Following *Sewper Rx* Treatment Program

**Actual – June 2010 – BOD 4, TSS 11 mg/l**



## Segmented waste lagoon system

**Problem:** Intense odors due to sludge buildup around edges of lagoon

Sludge was at least 7 feet thick on almost all edges of the lagoon

**Resolution:** Contractors pumped Sewper Rx hydrate into sludge

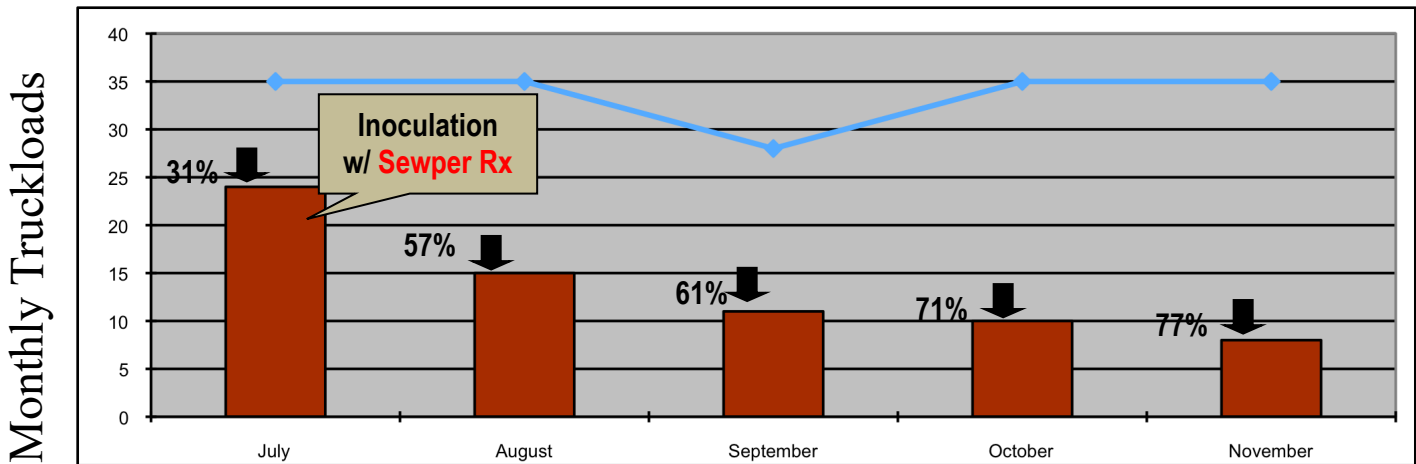
**Within 70 days the sludge level had dropped below the water level**



## Hog Farm Waste Lagoon

**Problem:** Excessive odors and concern of groundwater contamination  
*Sewper Rx* added and water tests performed  
 before treatment and 60 days following treatment

|                               | BOD<br>mg/l  | Nitrogen<br>mg/l | Ammonia<br>mg/l | Phosphorus<br>mg/l | Sludge<br>Depth<br>Inches | E. Coli<br>Col/100ml |
|-------------------------------|--------------|------------------|-----------------|--------------------|---------------------------|----------------------|
| Before<br>Treatment           | 460          | 565              | 411             | 218                | 48                        | 68,900               |
| After<br>Treatment<br>60 days | 76<br>-83.5% | 328<br>-42%      | 223<br>-46%     | 54<br>-75%         | 42<br>-14%                | 39,994<br>-42%       |



Historical Average Truckload



Monthly Truckloads Post-treatment

## 1 MGD Wastewater Plant

**Problem:** Desire to reduce sludge hauling costs and eliminate odors  
**Resolution:** *Sewper Rx* added to aeration process and digesters  
 Within 5 months 77% of sludge hauling eliminated  
 Odors eliminated in 2-3 days

## Do these claims seem unbelievable to you?

If so, contact us – no pressure selling – just facts – we will provide a reference list and we are willing to prove all these claims in your own plant.

For more examples of *Sewper Rx* success visit our website at [www.reliantwater.us.com](http://www.reliantwater.us.com)

We can provide you with a questionnaire that will allow us to propose a *Sewper Rx* program for your wastewater treatment plant.

If you have a waste lagoon that has odors, an over-abundance of sludge, or is not meeting your outfall permits – contact us – we DO have a solution.

---

### *Sewper Rx* is the answer if -

- Your plant has insufficient capacity
- You are experiencing escalating operating costs
- Your plant has sludge build-up problems
- You are experiencing violations/fines due to discharge problems
- Your plant is receiving too many complaints over noxious odors

---

*Sewper Rx* is producing impressive results in hundreds of waste treatment applications:

- Package plants
- Municipal facilities
- Oxidation lagoons
- Grease traps
- Agricultural waste remediation projects

*Sewper Rx* is easy to use:

- Requires no special equipment
- Requires no changes to your facility
- Improves plant efficiency
- It is cost effective

*Sewper Rx* greatly reduces the need for:

- Drying beds
- Belt presses
- Incinerators
- Frequent sludge pumping
- Sludge hauling
- Sludge disposal

*Sewper Rx* saves:

- Money
- Polymers
- Chemicals
- Electricity

Finally, *Sewper Rx* has settling properties that promote lower levels of TSS, BOD and it reduces fecal coliform and *E. coli* bacteria levels.

Contact us today and find out how we can help you.

---

**RELIANT**

Water Technologies

5670 Hayne Blvd.  
New Orleans, LA 70126  
Tel 504-400-1239  
FAX 504-242-8887

[sales@reliantwater.us.com](mailto:sales@reliantwater.us.com)  
[www.reliantwater.us.com](http://www.reliantwater.us.com)

Represented by -